



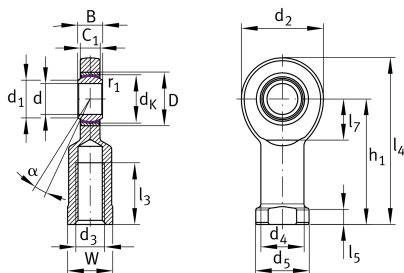
GIR17-UK

Rod end

Schaeffler ID:
0066354580000

Rod end with internal thread, maintenance-free, sliding layer: PTFE composite, DIN ISO 12240-4, dimension series E, type F, inner ring curved surface with hard chromium coating, open design, right hand thread

Technical information



Main Dimensions & Performance Data

d	17 mm	Bore diameter bearing
D	30 mm	Outside diameter bearing
B	14 mm	Width inner ring
C _r	22,500 N	Basic dynamic load rating, radial
C _{0r}	56,500 N	Basic static load rating, radial
	0.246 kg	Weight

Dimensions

d _K	25 mm	Ball diameter
d ₁	20.7 mm	Outer flange diameter inner ring
d ₂	46 mm	Outer eye diameter
d ₃	M16	Thread size
d ₄	24 mm	Shank diameter
h ₁	67 mm	Shank Length Internal thread head
C ₁	11 mm	Width of the rod end
α	10 °	Tilt angle
l ₃	34 mm	Thread length Internal thread
l ₄	90 mm	Total length internal thread head
l ₅	10 mm	length rod end shank
l ₇	23 mm	Distance drilling with/shaft start
d ₅	30 mm	Shank diameter, large
W	27 mm	Width Across Flat
G _r	0 - 0,04 mm	Radial Clearance
d _{OT}	0 mm	Bore diameter bearing, upper tolerance
d _{UT}	-0.008 mm	Bore diameter bearing, lower tolerance
B _{OT}	0 mm	Width inner ring, upper tolerance
B _{UT}	-0.12 mm	Width inner ring, lower tolerance

Mounting dimensions

r _{1smin}	0.3 mm	Edge Spacing
--------------------	--------	--------------

Temperature range

T _{min}	-50 °C	Operating temperature min.
T _{max}	200 °C	Operating temperature max.